

**Modular Equipment 32000 Series**  
**Pie & Salad Display Cases, 58" high Single**  
**Service, S/S Top -**  
**Self-Contained**



*Custom-5032 shown with optional stainless steel finished end.*

**SPECIFICATIONS:**

**BASE TOP:** Die-formed construction of one-piece 16 GA stainless steel type 304-#4 finish with 2-5/8" nosing. Sheared ends fitted with recessed 12 GA steel bars for adjoining units, producing a hairline seam.

**DISPLAY-SINGLE SERVICE:** Top of 20 GA stainless steel, type 304-#4 finish. Exterior and interior sides of stainless steel. Sliding, insulated, tempered-glass doors are self-closing. Fluorescent lights and display shelves included. Ducts provided in back wall for even air distribution. Acrylic-mirrored back and 2-1/2" deep 2000 series pans included in base top.

**EXTERIOR BASE:** Back, bottom, and sides of 20 GA steel with painted enamel finish. Body supported by 14 GA galvanized steel box channels for legs.

**CONDENSER HOUSING:** Fitted with a stainless steel snap-on louvered panel.

**INTERIOR:** Bottom and back 22 GA stainless steel type 304-#2B finish. Sides of one-piece high-impact plastic and top of aluminum.

**INSULATION:** Rigid Polyurethane Foam.

**DOOR JAMS:** One-piece high-impact plastic with concealed magnets on perimeter for

positive sealing.

**SHELVES:** One removable, heavy-steel frame, vinyl-coated shelf per door.

**DOORS:** Exterior of one-piece die-stamped 22 GA stainless steel type 304-#4 finish. Interior of high-impact plastic and magnetic gasket mounted with reusable hardware. Doors mounted on 12 GA stainless steel hinges with brass pivot pins and nylon bushings. Stainless handle with stamped grip.

**LEGS:** Removable 8" high x 1-5/8" tubing welded to a steel plate, fastened to body support channel. Bullet foot has 1-1/8" of adjustment. Exposed legs of stainless steel and unexposed legs of corrosion-resistant steel.

**REFRIGERATION:** Self-Contained unit has high temperature balanced system using a hermetically-sealed condenser. Unit has forced air evaporator with protective coated coil and expansion valve. System comes assembled with cord and 5-15P or 5-20P plug. Base tested to operate between 36 and 40 degrees F. Display tested to operate between 44 and 48 degrees F.

ITEM # \_\_\_\_\_

PROJECT \_\_\_\_\_

DATE \_\_\_\_\_

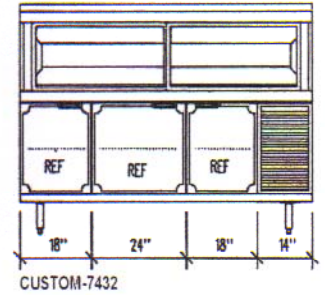
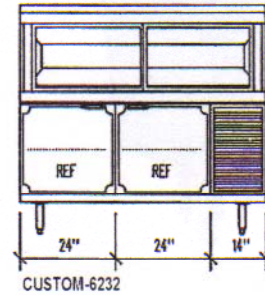
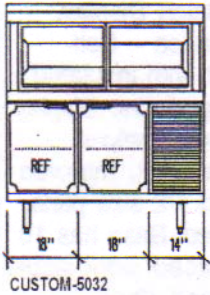
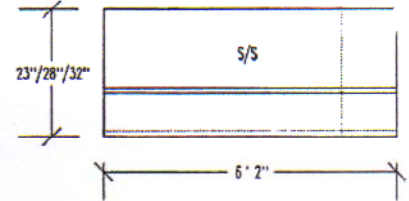
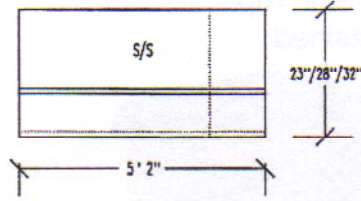
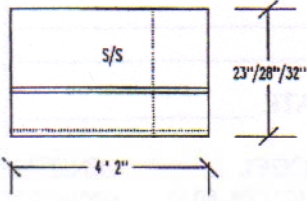
MODEL	LENGTH
CUSTOM-5032	50"/4'-2"
CUSTOM-6232	62"/5'-2"
CUSTOM-7432	74"/6'-2"
DEPTHS	
	23"/28"/32"

**SUMMARY**  
Pie and Salad Display, Single Service - Self-Contained with insulated, self-closing doors. Display includes two shelves, fluorescent light, mirrored back, and 1/2 size pans. Refrigerated Base has 16 GA reinforced work ledge. Die-stamped doors, mounted on pivot hinges. One wire shelf per door. Removable 8" high adjustable legs.

- FEATURES**
- Lighted display area.
  - Self-closing, insulated glass doors.
  - Fractional pan display.
  - Display area has duct system for cooling.
  - Refrigeration system has expansion valve and control for rapid, accurate recovery.
  - Legs are removable in field.
  - Uniform integration in design, quality, and parts.
  - Work ledge is 13" deep on 32" unit, 9" deep on 28" unit, and 4" deep on 23" unit.

# Modular Equipment 32000 Series

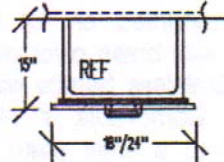
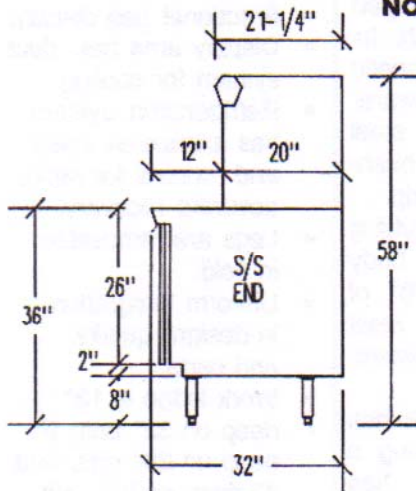
## DIMENSIONAL DATA



**NOTE:** Compressor left available.

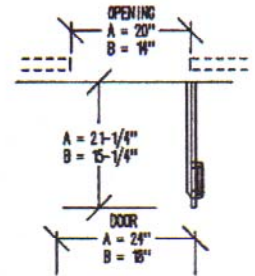
MODEL <i>note 1</i>	LGTH.	CAPACITY (CU. FT.)				SHELVING (SQ. FT.)				CONDENSING UNIT	VOLTS CYCLE PHASE	TOTAL AMPS <i>note 2</i>	NEMA PLUG	SHIP WT.		
		BASE DEPTH				BASE DEPTH										
		DISP. 20	23	28	32	DISP. 20	23	28	32						# PER BASE	
CUSTOM-5032	50"	4.3	5.5	7.5	9.1	6.1	7.3	9.5	11.3	2	2	1/3 hp R-134a	115/60/1	11.4	5-15P	655#
CUSTOM-6232	62"	5.4	7.9	10.7	12.9	7.8	10.0	13.1	15.5	2	2	1/3 hp R-134a	115/60/1	11.5	5-15P	710#
CUSTOM-7432	74"	6.6	10.4	13.9	16.7	9.4	12.7	16.6	19.7	2	3	1/2 hp R-134a	115/60/1	14.3	5-20P	780#

- NOTE:**
1. Display comes with 1/2-size pans in place of stainless steel top shelf.
  2. Optional hot gas condensate evaporator is factory recommended. If electric evaporator is required add .39 AMPS to total.



18" drawer-front liner-dimension  
13-1/2" x 20-1/4" x 5-3/4" deep

24" drawer-front liner-dimension  
19-1/2" x 20-1/4" x 5-3/4" deep

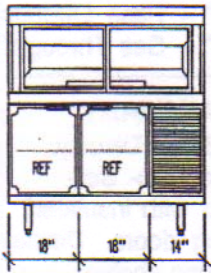
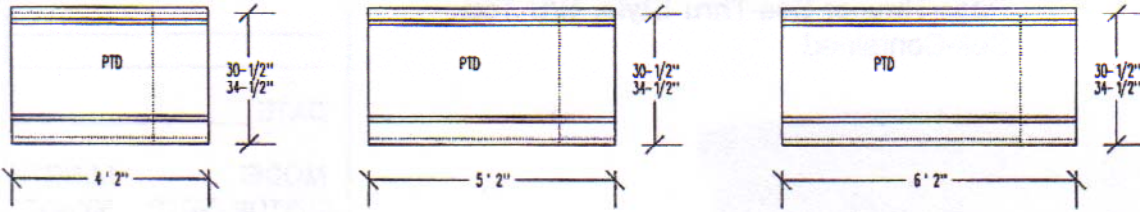


MECHANICAL DATA	
<b>LEGEND</b>	
(C)	Condensing unit wired to junction box 26" AFF. Rear of condenser compartment is open for cord to exit. See chart for load requirements.
S □	On/Off switch 26" AFF with 8 foot cord and plug.
○	5/8" O.D. copper drain for evaporator condensate 16" AFF

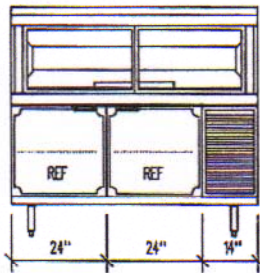


# Modular Equipment 32000 Series

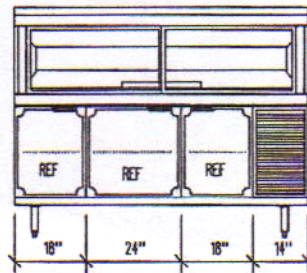
## DIMENSIONAL DATA



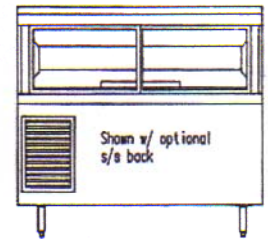
CUSTOM-5932P



CUSTOM-6232P



CUSTOM-7432P

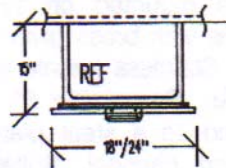
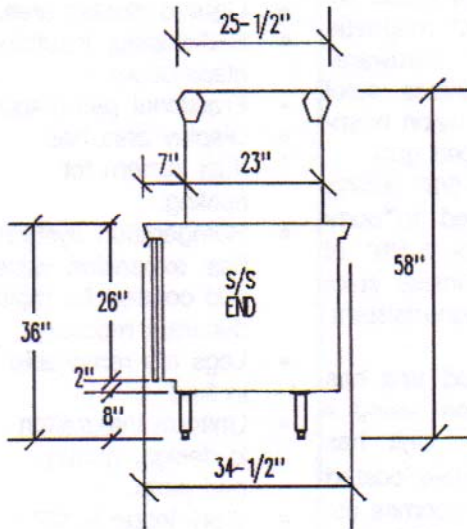


**NOTE:** Compressor left available.

MODEL <i>note 1</i> <i>note 2</i>	LGTH.	CAPACITY (CU. FT.)				SHELVING (SQ. FT.)				CONDENSING UNIT	VOLTS CYCLE PHASE	TOTAL AMPS <i>note 3</i>	NEMA PLUG	SHIP WT.		
		BASE				BASE										
		DISP.	23	28	32	DISP.	23	28	32						# PER BASE	
CUSTOM-5932P	50"	4.3	5.5	7.5	9.1	6.1	7.3	9.5	11.3	3	2	1/3 hp R-134a	115/60/1	11.4	5-15P	685#
CUSTOM-6232P	62"	5.4	7.9	10.7	12.9	7.8	10.0	13.1	15.5	3	2	1/3 hp R-134a	115/60/1	11.5	5-15P	740#
CUSTOM-7432P	74"	6.6	10.4	13.9	16.7	9.4	12.7	16.6	19.7	3	3	1/2 hp R-134a	115/60/1	14.3	5-20P	820#

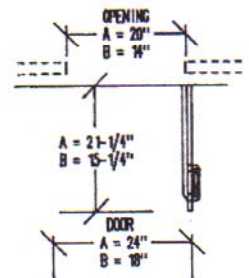
**NOTE:**

1. Display comes with 1/2-size pans in place of stainless steel top shelf.
2. See-Thru style top available, add suffix "S" in place of "P".
3. Optional hot gas condensate evaporator is factory recommended. If electric evaporator is required, add .39 AMPS to total.



18" drawer-front liner-dimension  
13-1/2" x 20-1/4" x 5-3/4" deep

24" drawer-front liner-dimension  
19-1/2" x 20-1/4" x 5-3/4" deep



### MECHANICAL DATA

- LEGEND**
- C. Condensing unit wired to junction box 26" AFF. Floor of condenser compartment is open for cord to exit. See chart for load requirements.
  - S. □ On/Off switch 26" AFF with 8 foot cord and plug.
  - 5/8" O.D. copper drain for evaporator condensate 16" AFF
  - D.

